

# NSW OPEN

## RATHMINES 2025

ADG MAJOR

OCT 4-6 2025



Presented by





# NSW Open

## Presenting Named Sponsors



**RPM Discs New Zealand**



**Total Tools Sandgate**

## Major Sponsors



**Jindy Disc Golf Shop**



**Desmond Insurance  
Brokers**



# NSW Open

## Caddie Book

### 2025 NSW Open

Thanks for registering to be part of the 2025 NSW Open.

Big thanks to our naming sponsors RPM Discs and Total Tools Sandgate, and to the dedicated volunteers at the Newcastle Disc Golf Club.

### Schedule

The tournament is being held at the Rathmines Disc Golf Course, which is located at Styles Point Reserve in Rathmines Park. We will be using both the Blue Advanced and Yellow Intermediate layouts for different divisions. It is possible to practice the course on Friday 3<sup>rd</sup> October from midday.

There are social nights on Saturday (glow round) and Sunday night (Longest Drive) with dinner at Club Catalina Bowling club on Sunday.

### Saturday 4th October, from 8am

8:00am – First groups ready (tee times per division)

From 7pm, glow round at Rathmines public tees

### Sunday 5th October, from 9am

9:00am - 2nd round (tee times per division)

From 5:30pm, Desmond Insurance Brokers longest drive comp on hole 14, with prizes. Followed by dinner at Club Catalina Bowling club, who are an event sponsor.

### Monday 6th October, from 8am

8:00am - 3rd round (tee times per division)

Rolling presentations for winners.

Presented by





# NSW Open

## Caddie Book

### **Advanced layout all 3 days**

MPO, FPO, MP40, FP40, MA1

### **Advanced layout Saturday and Monday, Intermediate Sunday:**

FA1, MA2, MA40

### **Advanced layout Sunday, Intermediate Saturday and Monday:**

MA50, FA2, MA3

### **Intermediate layout all 3 days:**

FA3, MA4, FA4, FA40, FA50, MJ15, FJ15

Presented by







# NSW Open

## **PDGA scoring**

All players must make sure they have a charged phone with at least 2 players scoring online via PDGA.

The event code is **2283 (Rathmines Postcode)**

## **Food**

Please BYO lunch or purchase from the nearby shops at Rathmines. We have dinner booked on Sunday night at Club Catalina bowling club (near hole 18).

## **CTP**

There will be a CTP competition for each group of divisions on each day of the event, check the hole by hole notes to see the holes for different divisions.

## **Player's meeting**

The pre-recorded player's meeting will be available to view from Tuesday night, with time for questions on Thursday night

Player's meeting video:

<https://www.youtube.com/@australiandiscgolf>

2025 NSW Open Q&A Session

Thursday, 2 October 2025

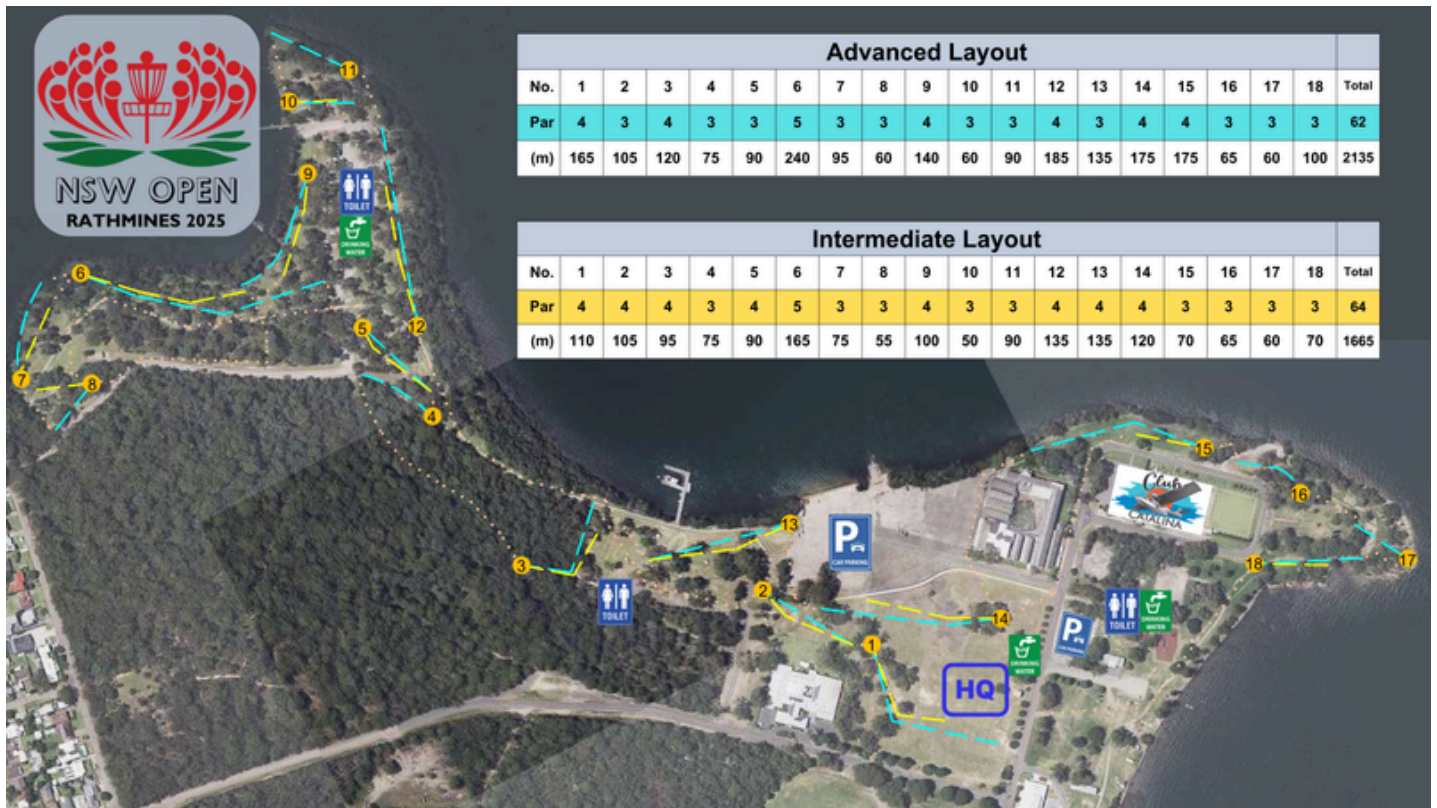
7:00 PM- 7:30 PM (AEST)

Meeting link: [2025 NSW Open Q&A Session | Microsoft Teams | Meetup-Join](#)

Presented by



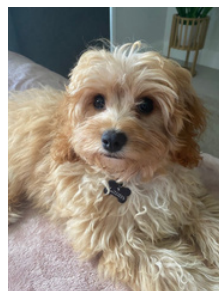
## Rathmines Course Map



The individual hole layouts are provided on future pages of this caddie book, but note that all roads and the lake are always out-of-bounds.

## Hole Sponsors & CTPs

Hole	Sponsor	CTP
1	RPM Discs NZ	
2	@stk.plasticplates	Rd 1 <b>Pro</b>
3	Hergs Weld	
4	Central West Disc Golf	Rd 1 Int <b>M&amp;F</b>
5	Bespoke Disc Golf	
6	Lone Star Disc	
7	Sydney Disc Golf	Rd 2 <b>Pro</b>
8	F45 Rutherford	Rd 2 Int <b>M&amp;F</b>
9	Newcastle Disc Golf	
10	Desmond Insurance Brokers	Rd 2 <b>Adv</b>
11	Club Catalina	Rd 3 <b>Adv</b>
12	Club Catalina	
13	Newcastle Disc Golf	
14	Club Catalina	
15	F45 Rutherford	Rd 3 Int <b>M&amp;F</b>
16	Total Tools Sandgate	Rd 1 <b>Adv</b>
17	Wiley Wiggins	
18	Club Catalina	Rd 3 <b>Pro</b>





# Hole 1 – Advanced

1

Par 4

165m



## Notes:

OB Road, Mando left of marked tree.  
The path behind the basket and long is OB.

Hole Sponsor



# Hole 1 – Intermediate

1

Par 4

110m



## Notes:

OB Road, Mando left of marked tree.  
The path behind the basket and long is OB.

Hole Sponsor





# Hole 2 – Adv/Int

2

2

ADV

Par 3

105m

INT

Par 4



## Notes:

OB – beyond the accommodation fence on the left, path and beyond on the right and road and beyond behind the basket.

There is a MANDO left of the marked tree and a marked hazard area on the left near the basket .

Hole Sponsor



CTP Day 1: MPO, MP40, FPO



# Hole 3 – Advanced

3

Par 4

120m



## Notes:

Toilet block concrete and on roof is OB.

After finishing the hole , follow the bush path approx 250m to arrive at no 4 tee pad.

Hole Sponsor



# Hole 3 – Intermediate

3

Par 4

95m



## Notes:

Toilet block concrete and on roof is OB.

After finishing the hole , follow the bush path approx 250m to arrive at no 4 tee pad.

Hole Sponsor





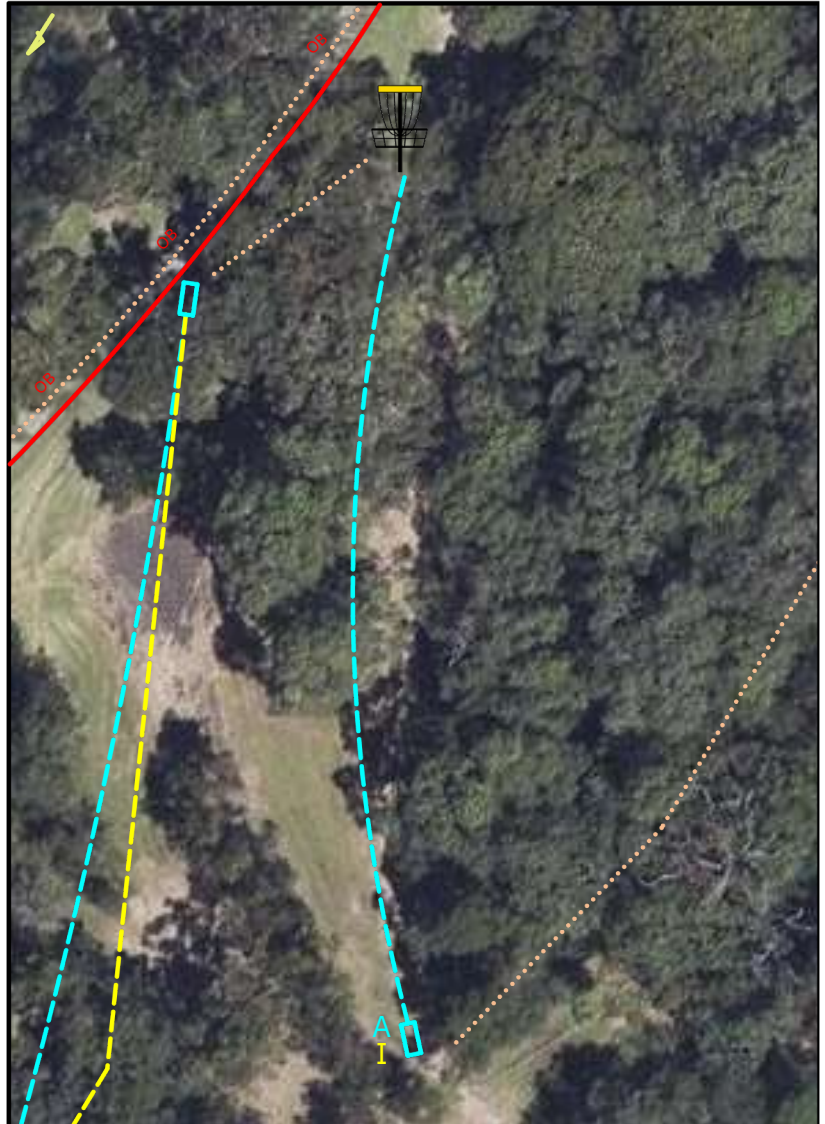
# Hole 4 – Adv/Int

4

4

Par 3

75m



## Notes:

OB – path and beyond behind the basket.

Please wait for all players to throw on hole 5's tee pad.

Hole Sponsor



CTP

Day 1: MA50, MA3, MA4, MJ15  
and FA2, FA3, FA4, FA40, FJ15

# Hole 5 – Adv/Int

5

5

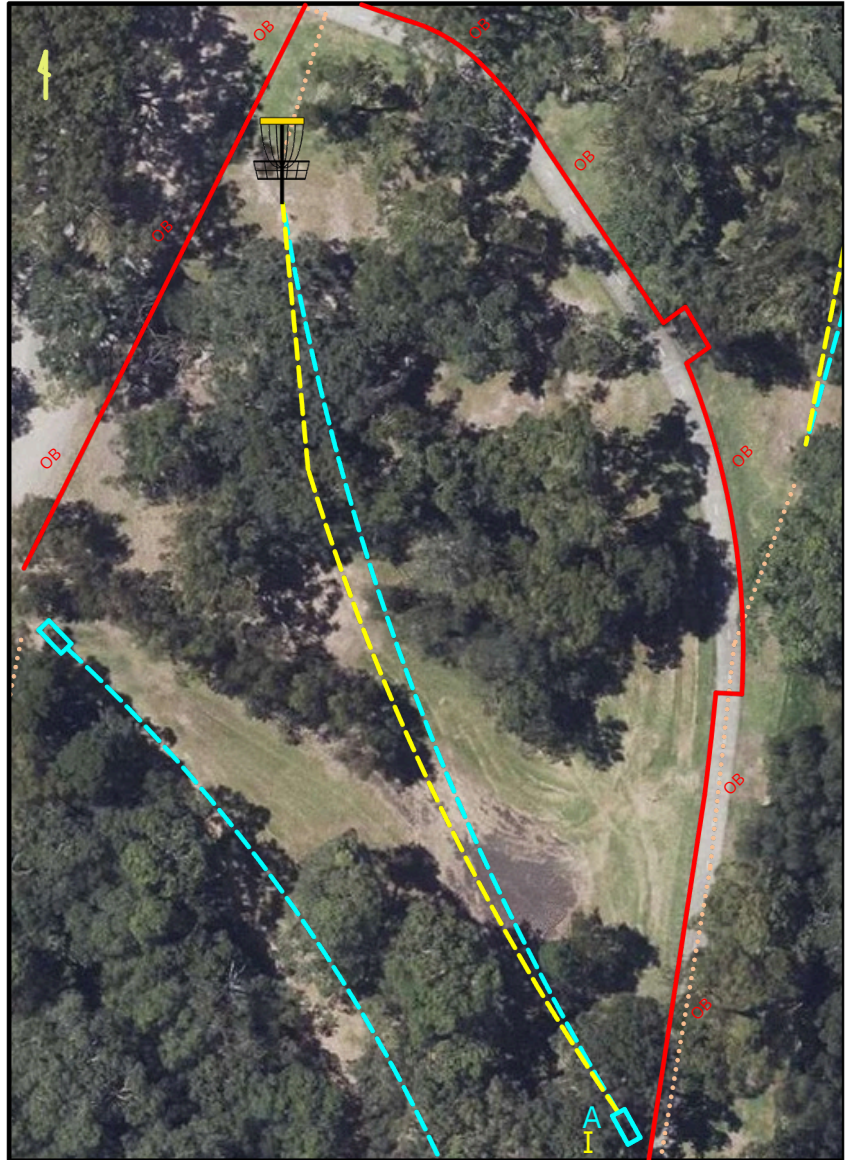
ADV

Par 3

90m

INT

Par 4



## Notes:

OB – fence and beyond behind the basket and path and beyond to right of basket.

Hole Sponsor



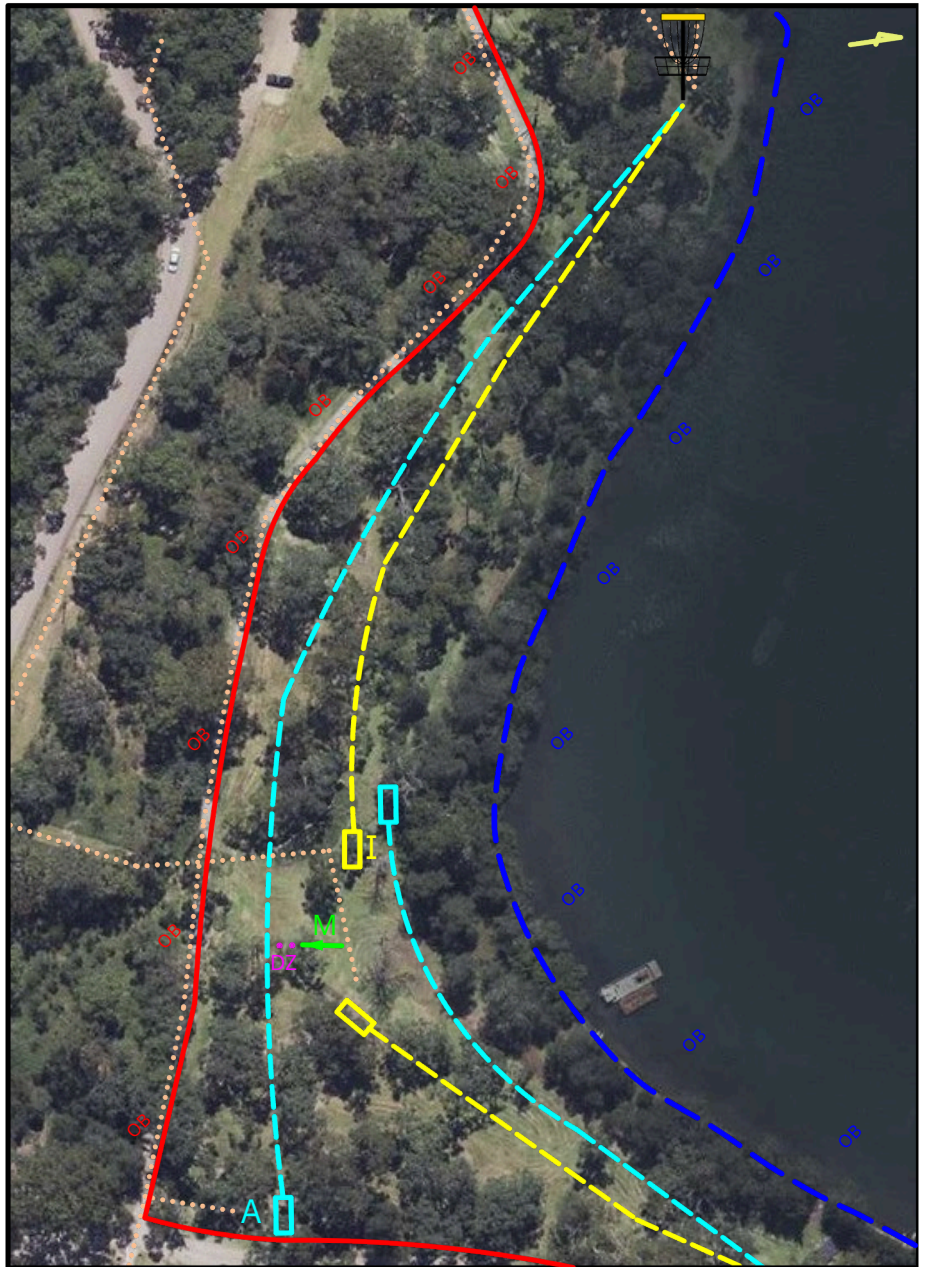


# Hole 6 – Advanced

6

Par 5

240m



## Notes:

Path to left and beyond is OB, water to the right is OB  
Mando left of marked tree

Hole Sponsor

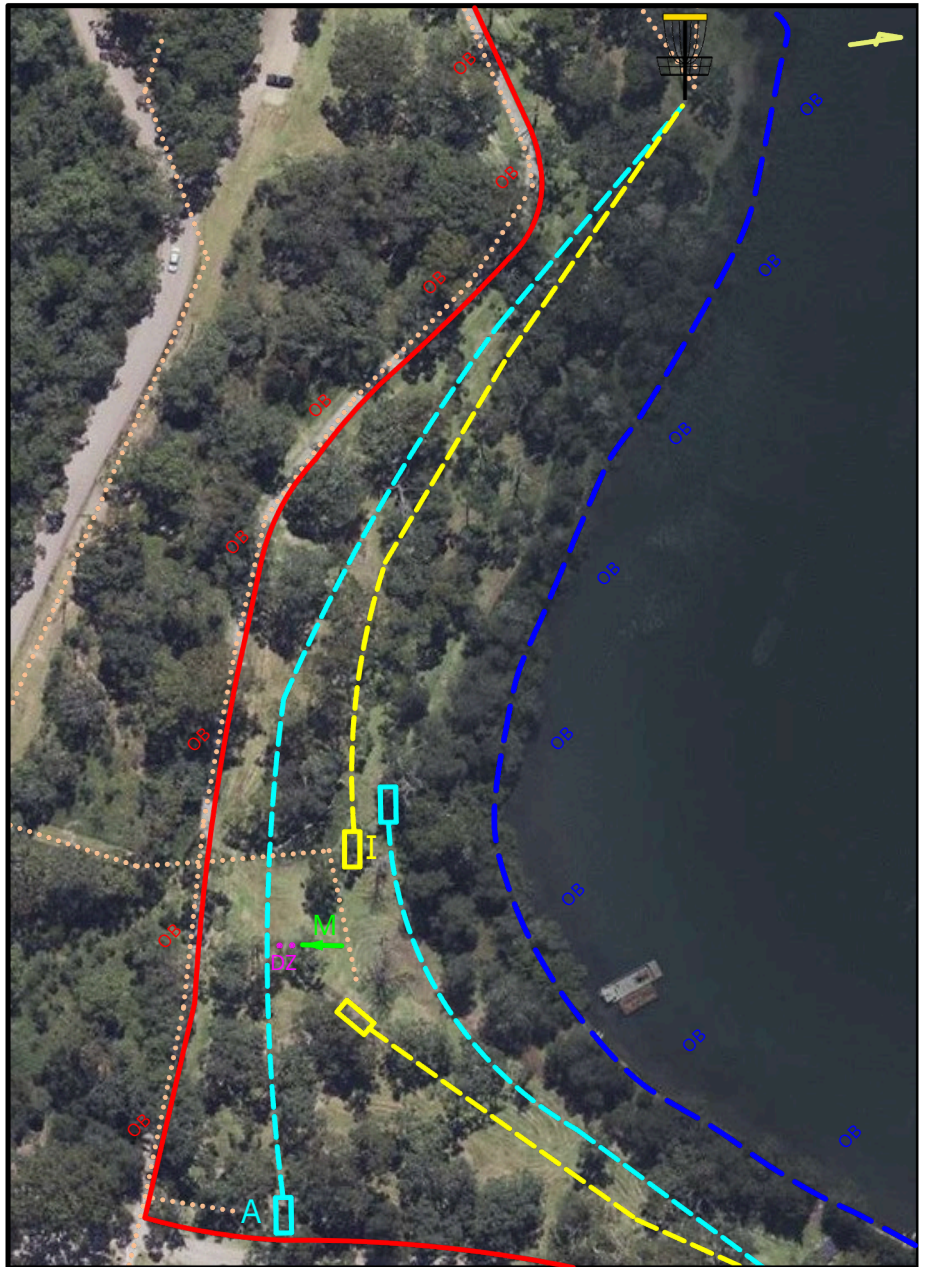


# Hole 6 – Intermediate

6

Par 5

165m



## Notes:

Path to left and beyond is OB, water to the right is OB

Hole Sponsor



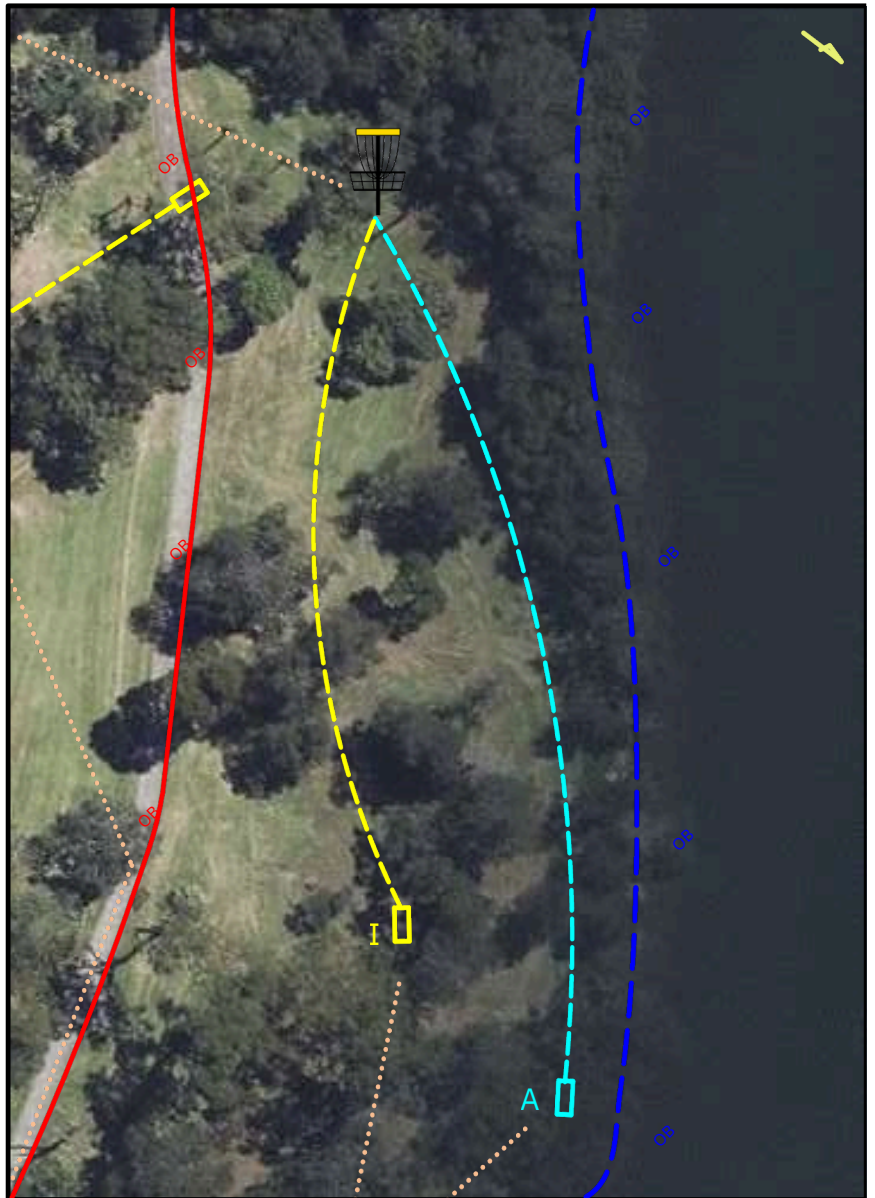


# Hole 7 – Advanced

7

Par 3

95m



## Notes:

Path to left and beyond is OB, water to the right is OB

Hole Sponsor



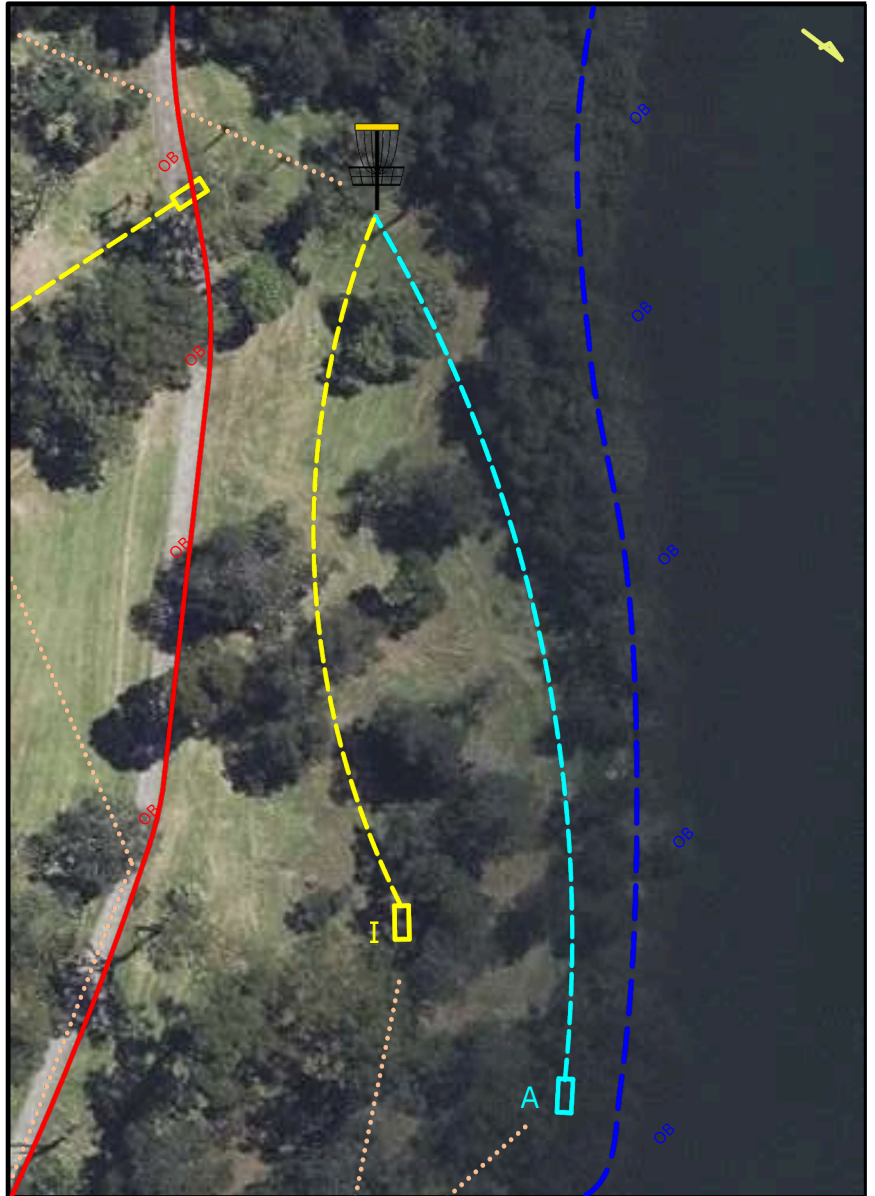
CTP Day 2: MPO, MP40, FPO

# Hole 7 – Intermediate

7

Par 3

75m



## Notes:

Path to left and beyond is OB, water to the right is OB

Hole Sponsor

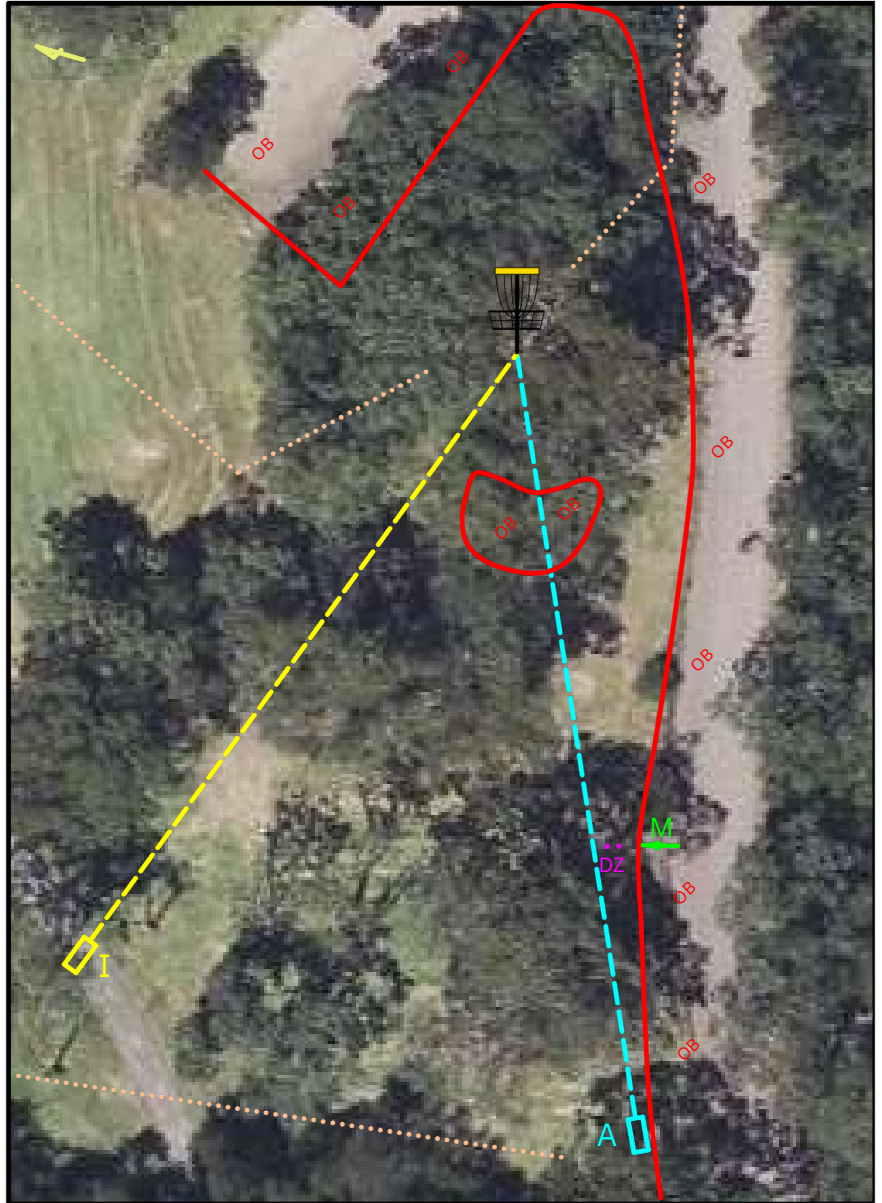


# Hole 8 – Advanced

8

Par 3

60m



## Notes:

Fence to the right and beyond is OB

Mando left of the marked tree, OB bunker near the basket

Hole Sponsor

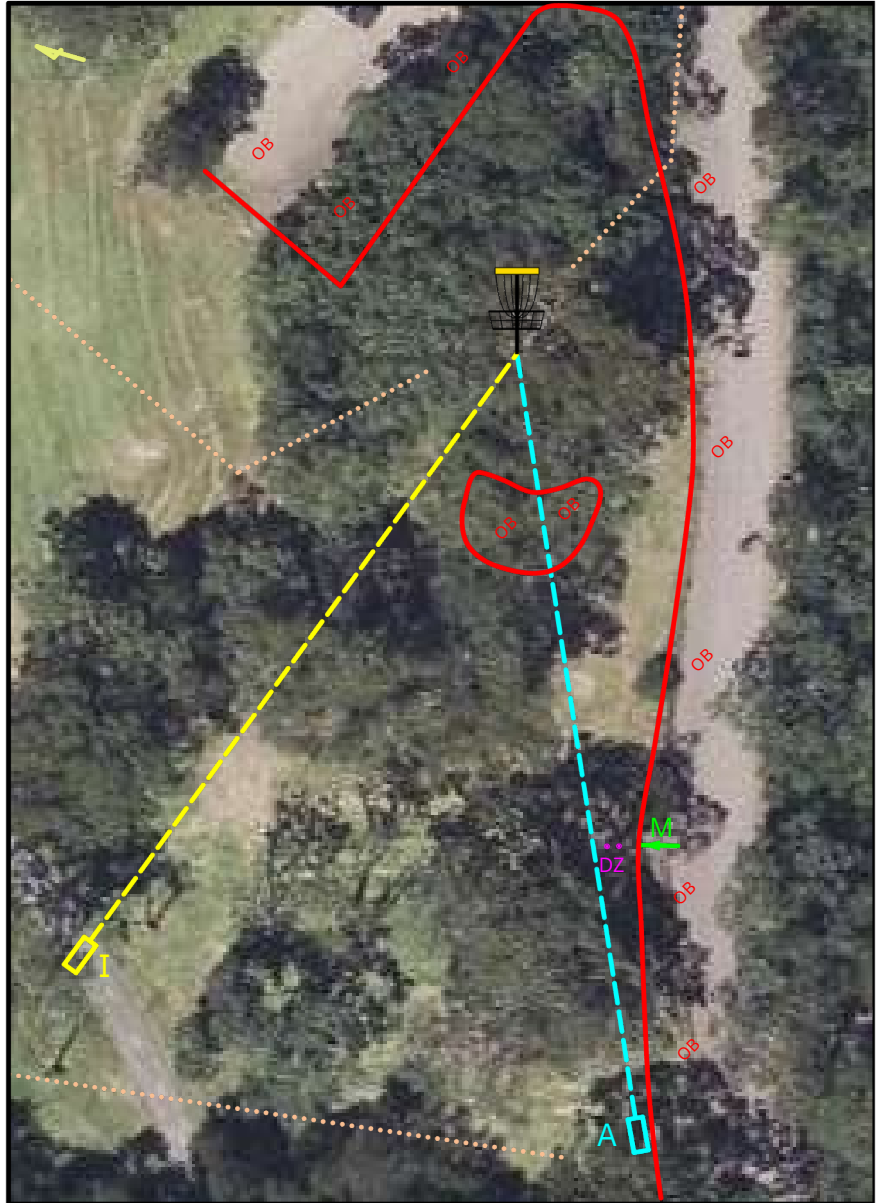


# Hole 8 – Intermediate

8

Par 3

55m



## Notes:

Fence to the right and beyond is OB

Mando left of the marked tree, OB bunker near the basket

Hole Sponsor



CTP

Day 2: MA2, MA40, MA4, MJ15  
and FA1, FA3, FA4, FA40, FA50, FJ15

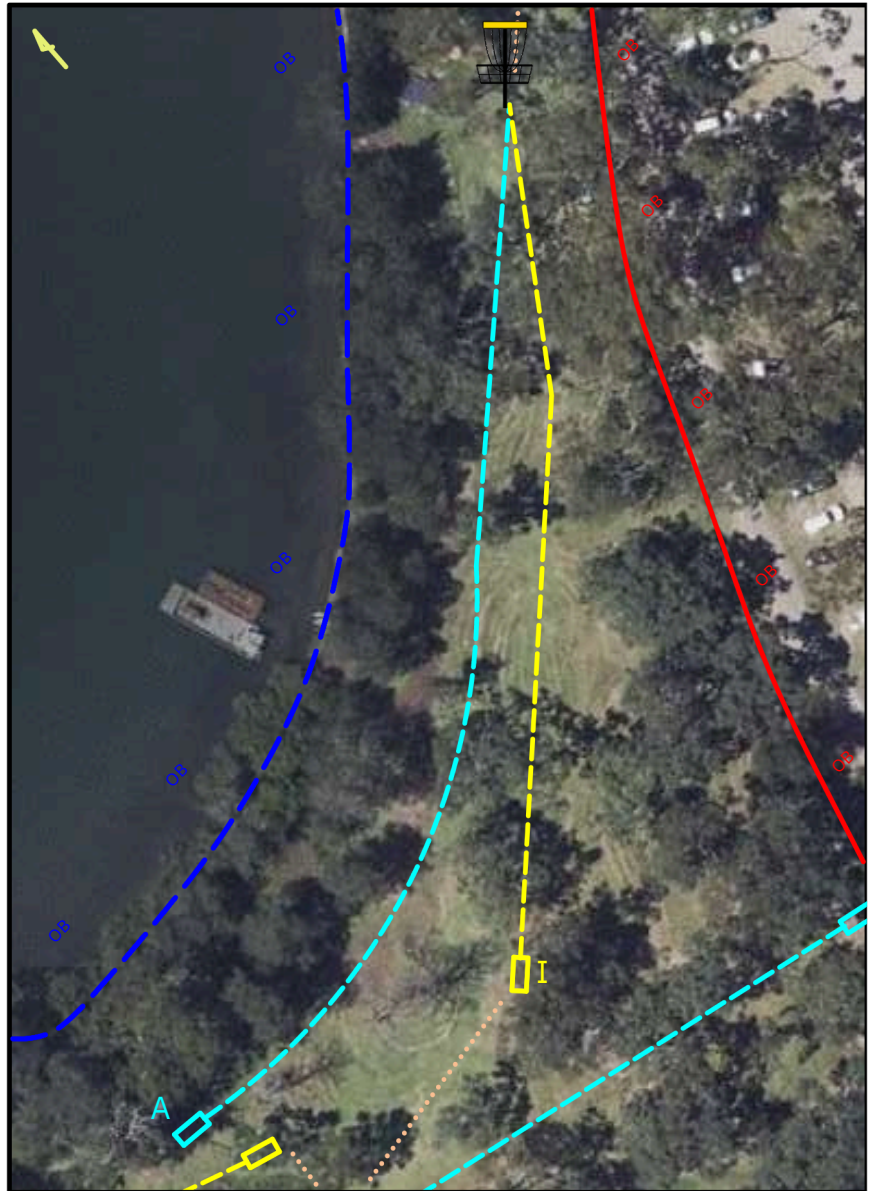


# Hole 9 – Advanced

9

Par 4

140m



## Notes:

Fence to the right and beyond is OB  
OB water left

Hole Sponsor

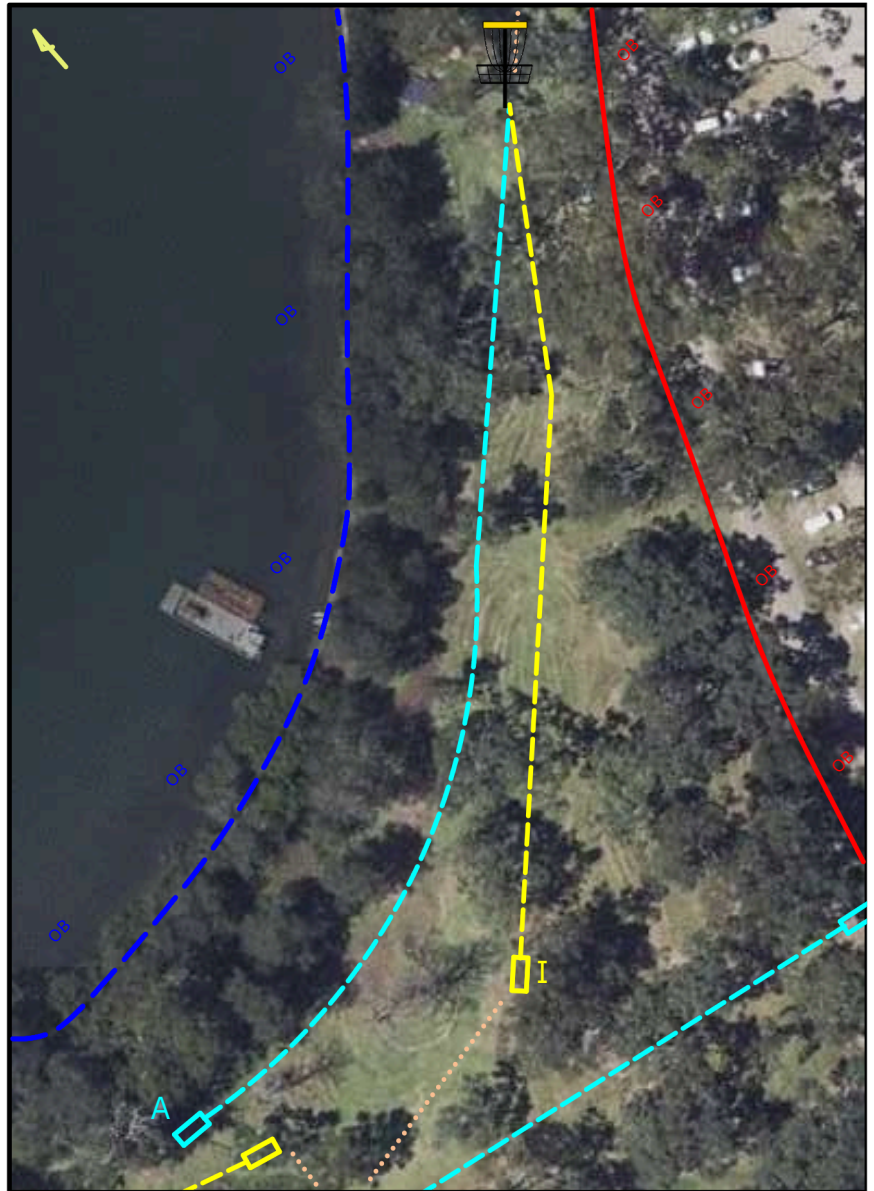


# Hole 9 – Intermediate

9

Par 4

100m



## Notes:

Fence to the right and beyond is OB  
OB water left

Hole Sponsor



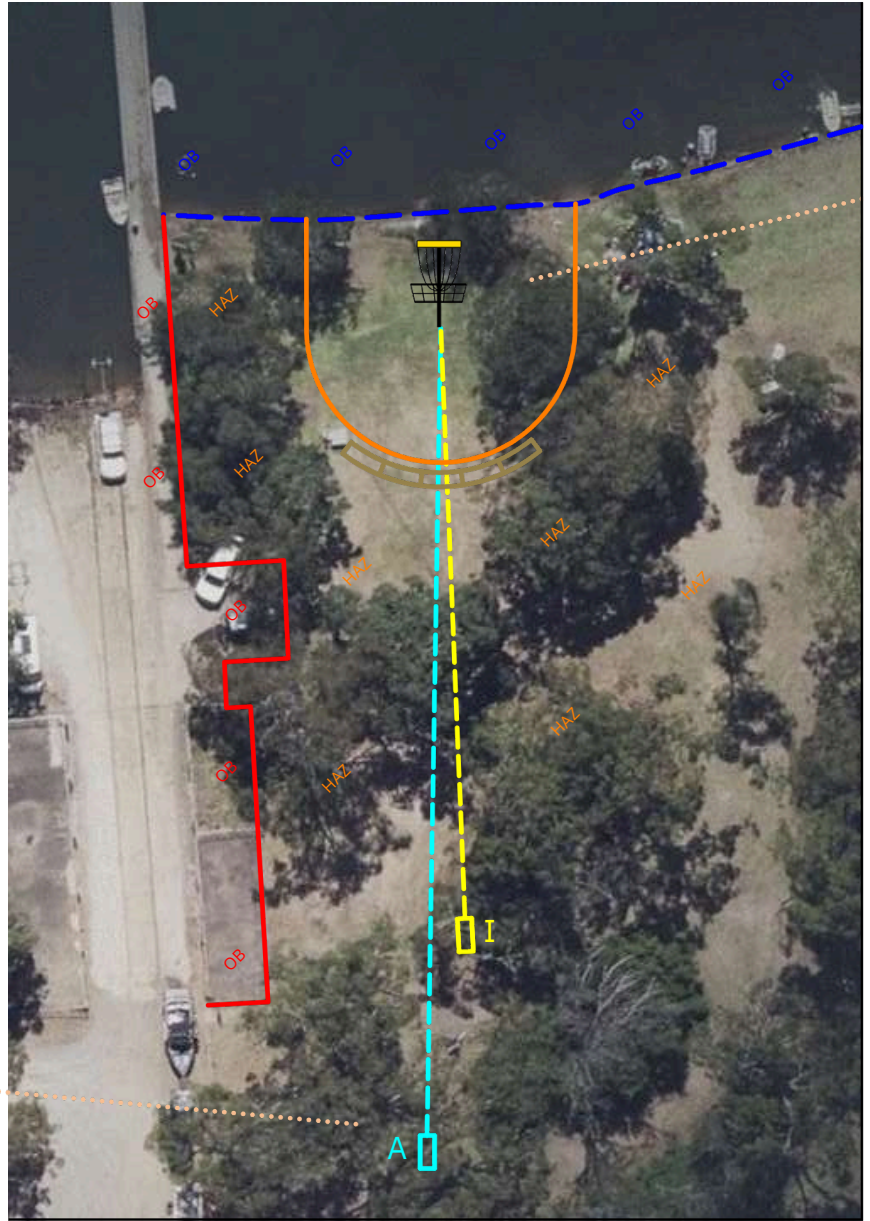


# Hole 10 – Advanced

10

Par 3

60m



## Notes:

Areas outside the defined green, short of the water are hazard.  
Concrete boat ramp and water is OB

Hole Sponsor



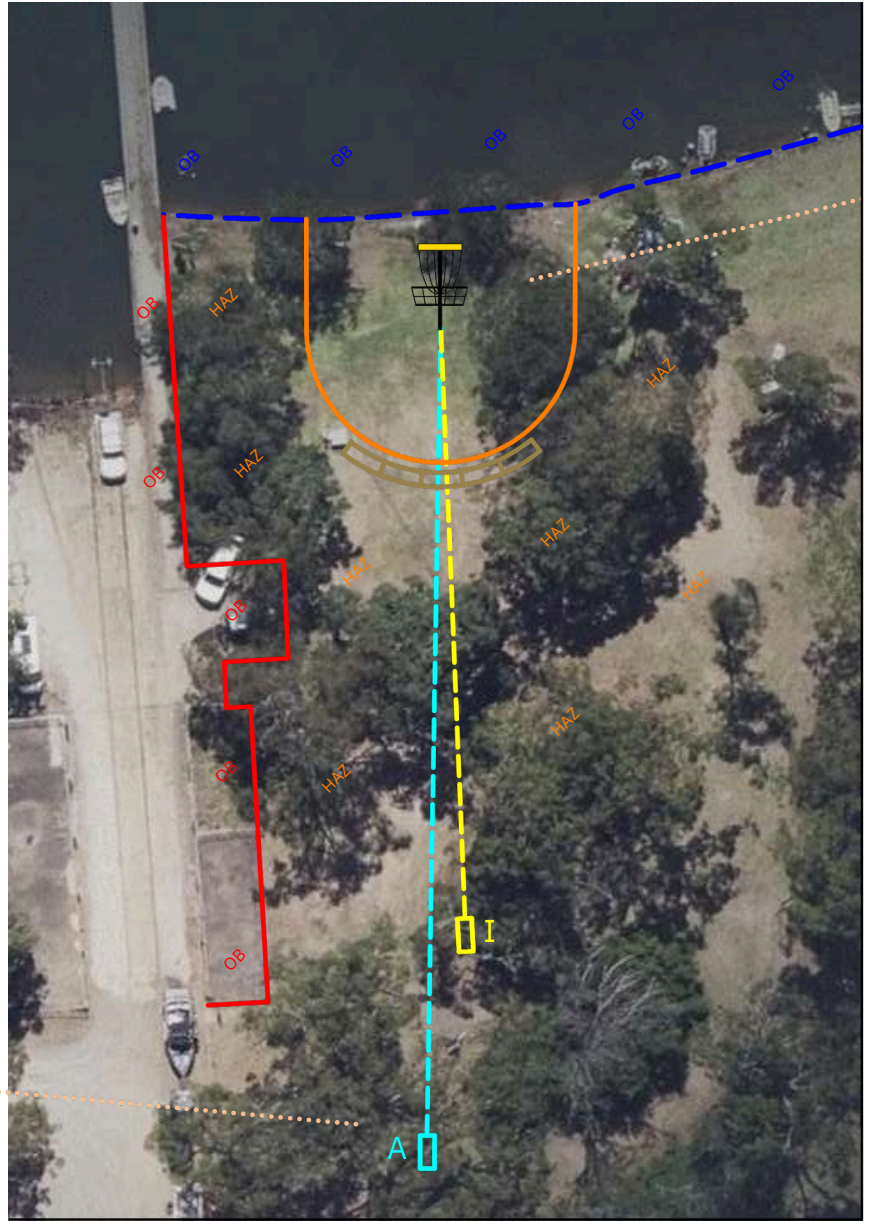
CTP Day 2: MA1, MA50, FA2, MA3

# Hole 10 – Intermediate

10

Par 3

50m



## Notes:

Areas outside the defined green, short of the water are hazard.  
Concrete boat ramp and water is OB

Hole Sponsor





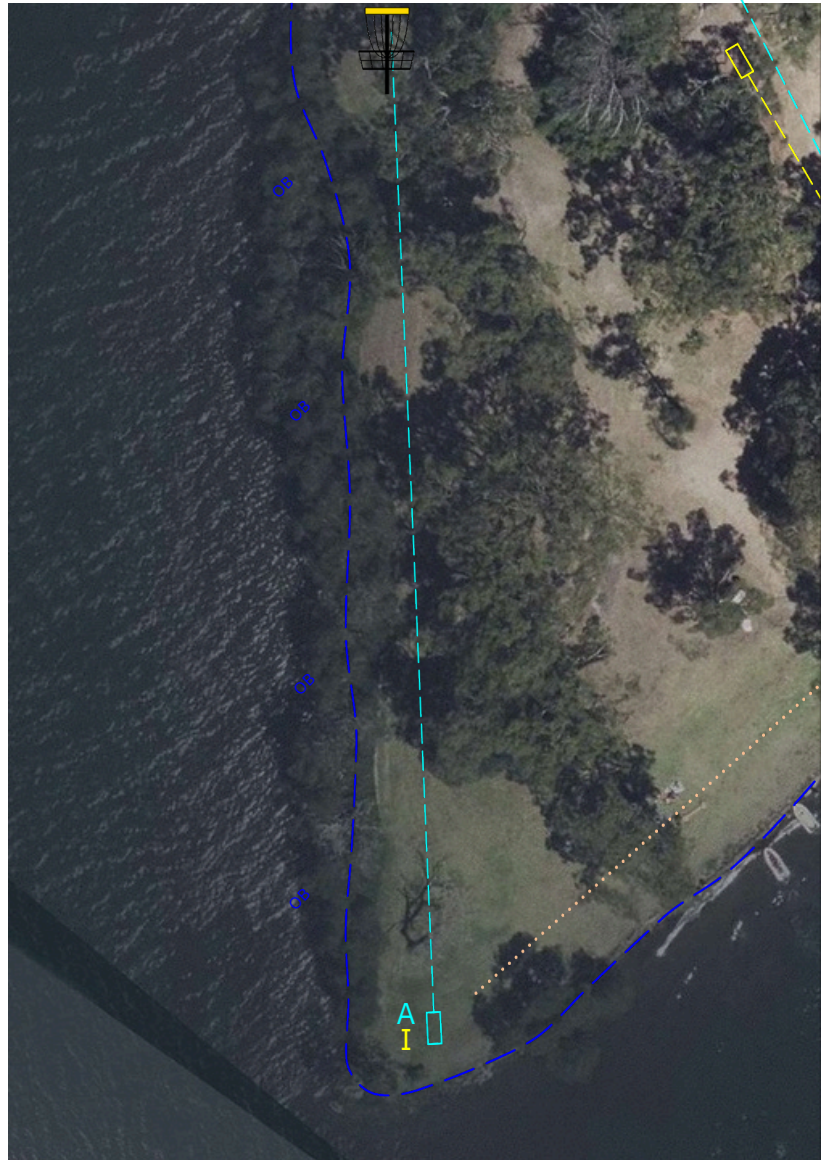
# Hole 11 – Adv/Int

11

11

Par 3

90m



## Notes:

OB water

Hole Sponsor



CTP Day 3: MA1, FA1, MA2, MA40

# Hole 12 – Advanced

12

Par 4

185m



## Notes:

OB fence to the right, MANDO left of the marked tree.  
OB path and beyond including under the bench seat.

Hole Sponsor





# Hole 12 – Intermediate

12

Par 4

135m



## Notes:

OB fence to the right.

OB path and beyond including under the bench seat.

Hole Sponsor



# Hole 13 – Adv/Int

13

13

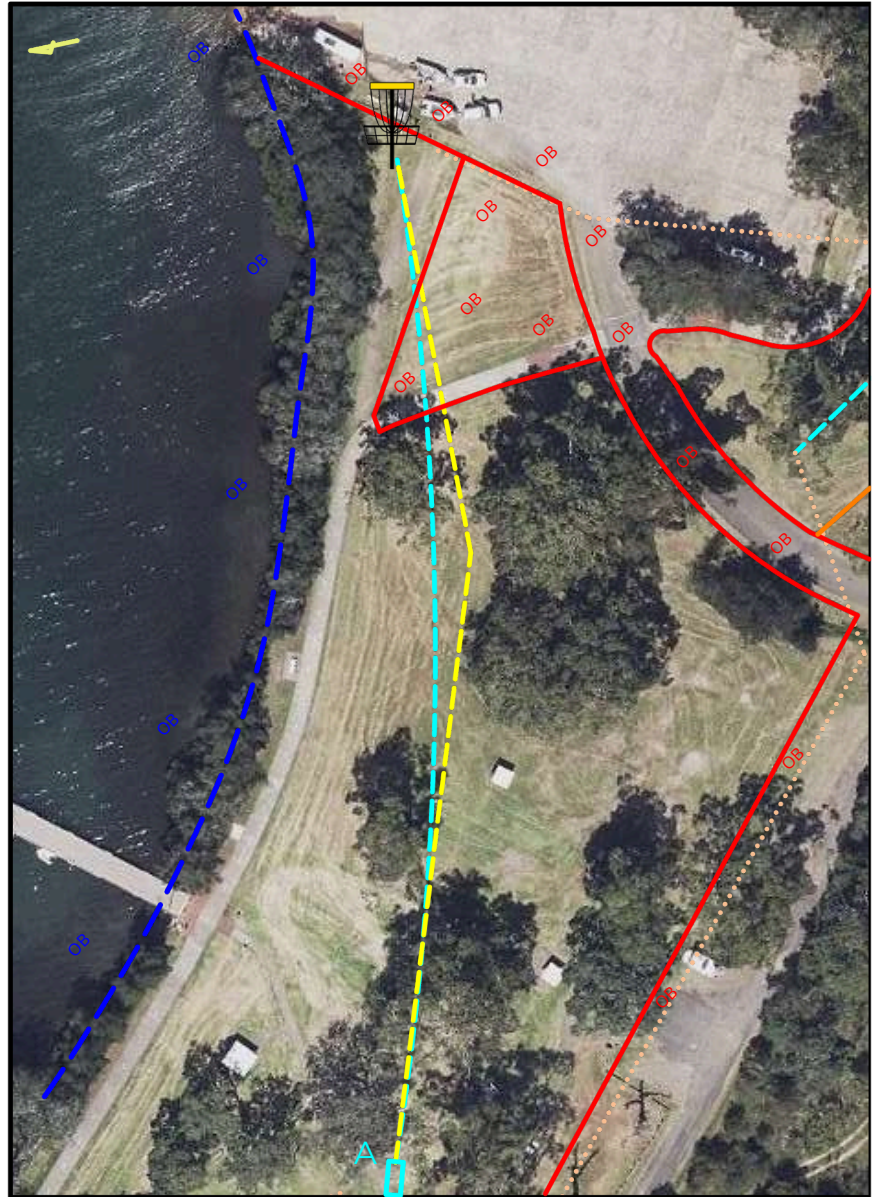
ADV

Par 3

135m

INT

Par 4



## Notes:

Marked fence and path and to the right and beyond is OB  
Marked area before car park (and car park) is OB.  
OB water. **Path to the left before water is not OB**

Hole Sponsor



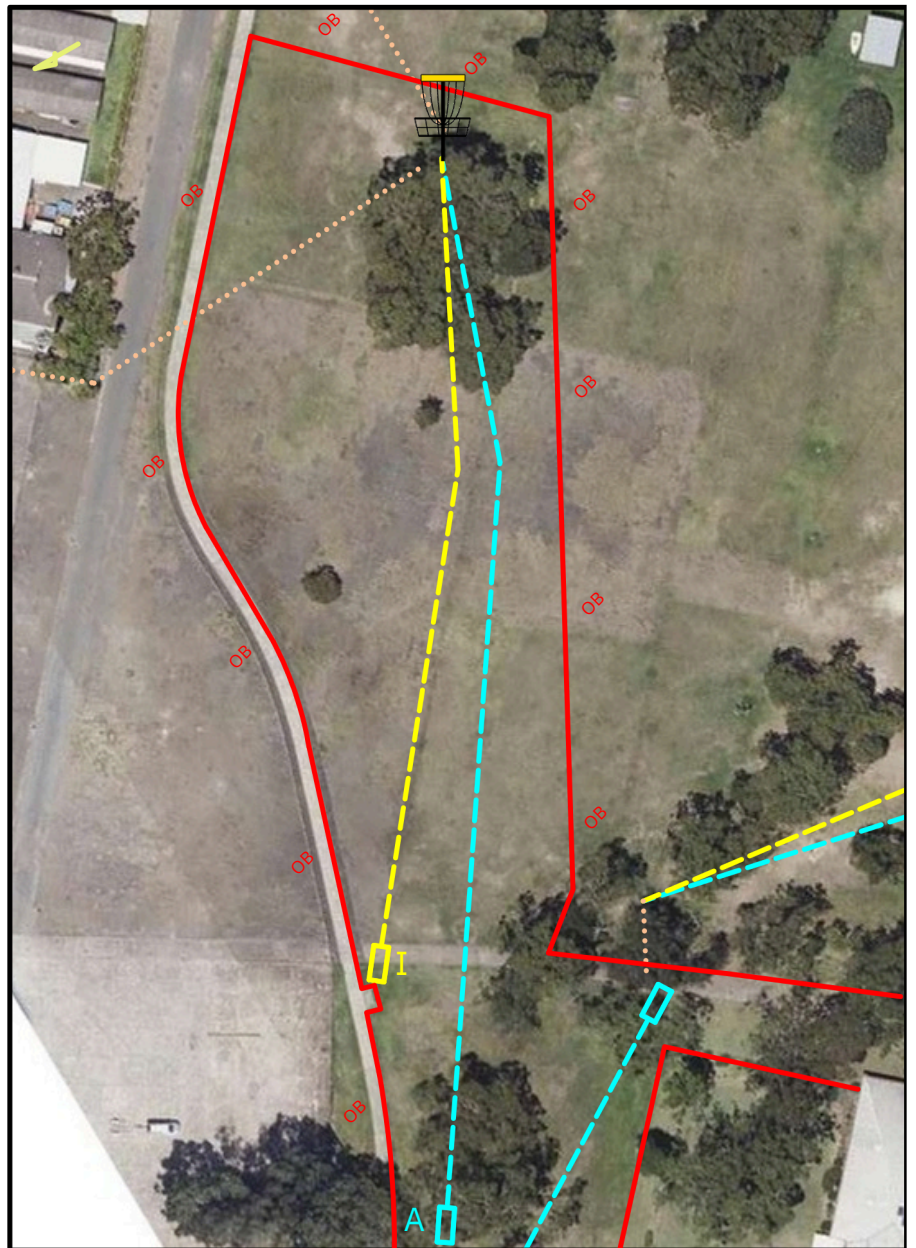


# Hole 14 – Advanced

14

Par 4

175m



## Notes:

OB path and beyond to the left  
OB line and beyond to the right and behind the basket

Hole Sponsor

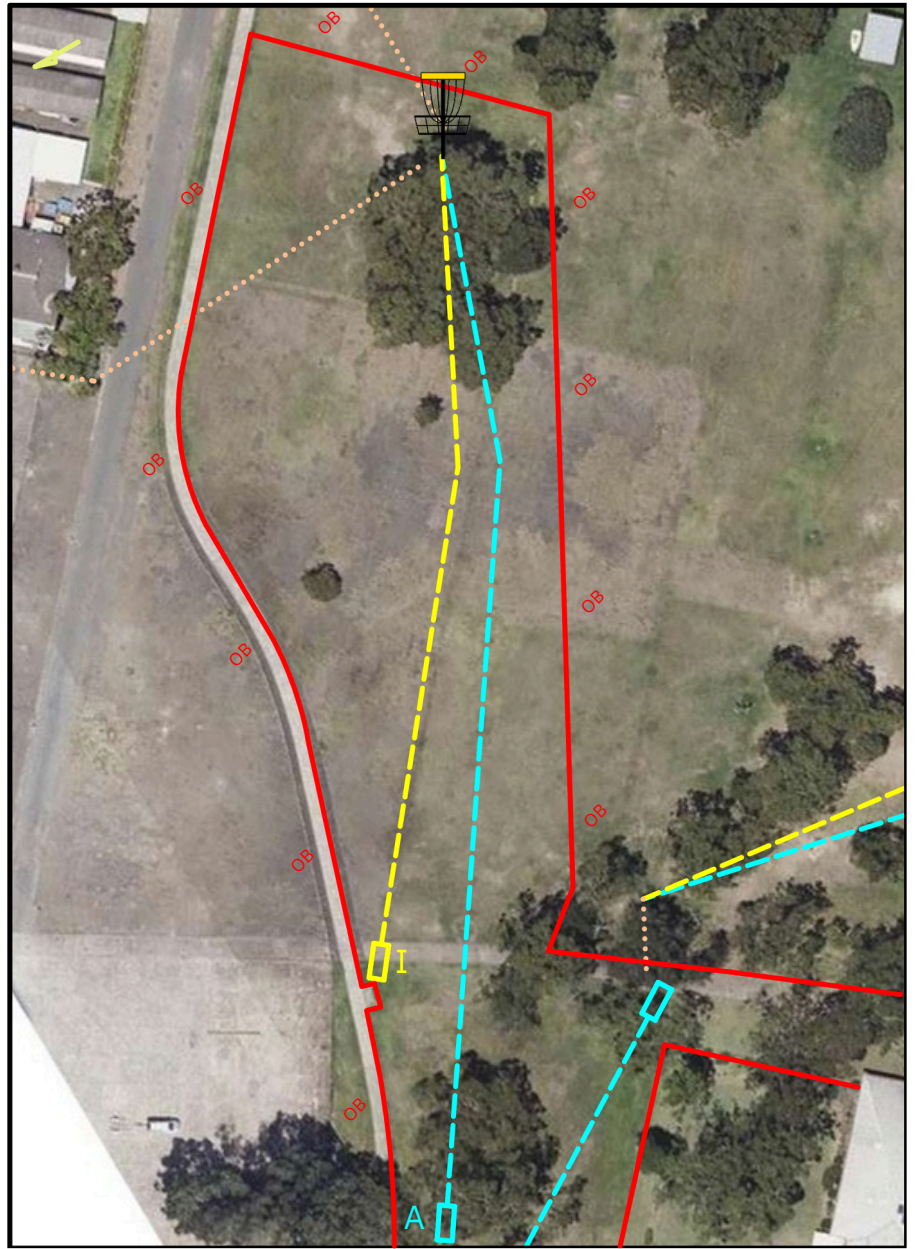


# Hole 14 – Intermediate

14

Par 4

120m



## Notes:

OB path and beyond to the left  
OB line and beyond to the right and behind the basket

Hole Sponsor



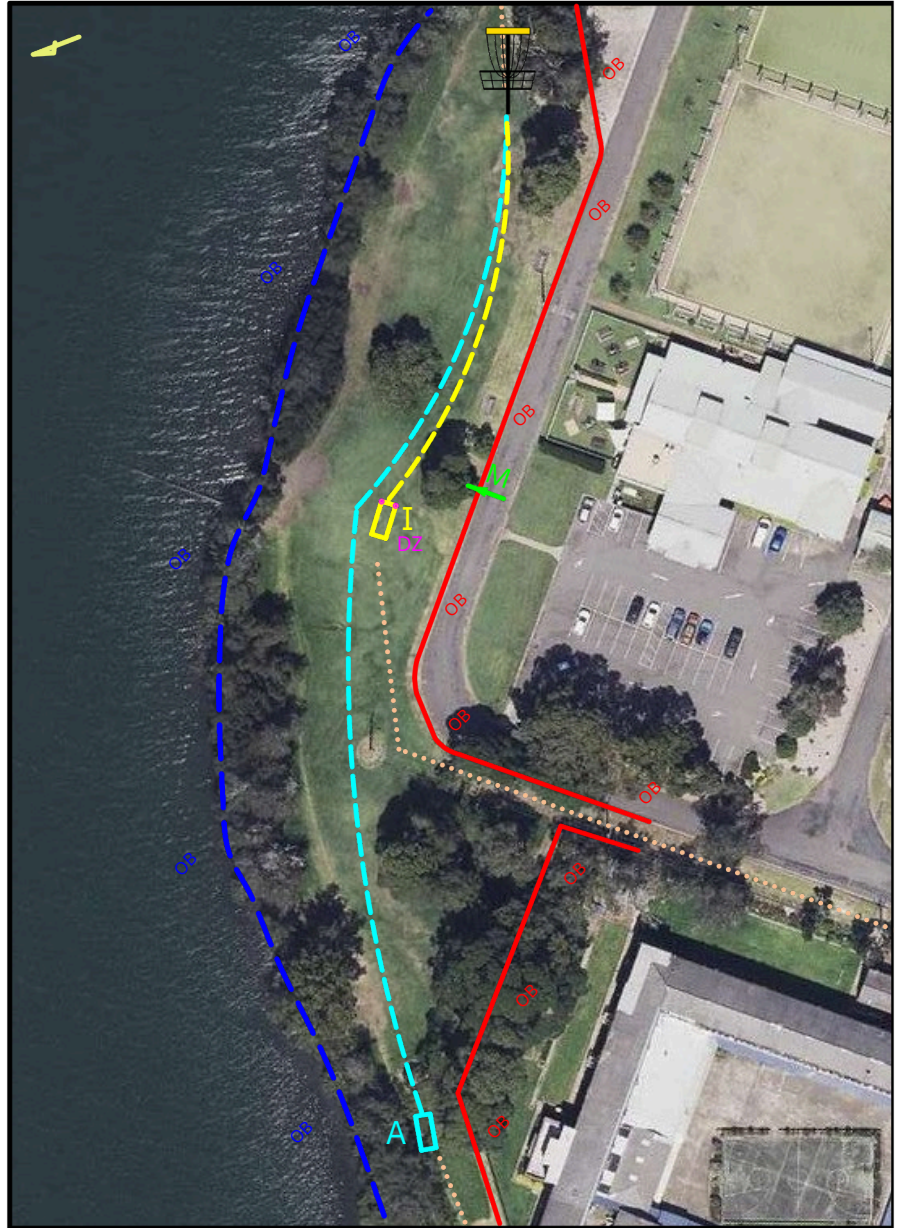


# Hole 15 – Advanced

15

Par 4

175m



## Notes:

OB water left, OB road and beyond right  
Mando left of marked tree. DZ is Intermediate tee.

There is a PDGA 806.03 Casual Area declared for the lantana behind the basket. An optional relief DZ is marked 12m from the basket.

Hole Sponsor



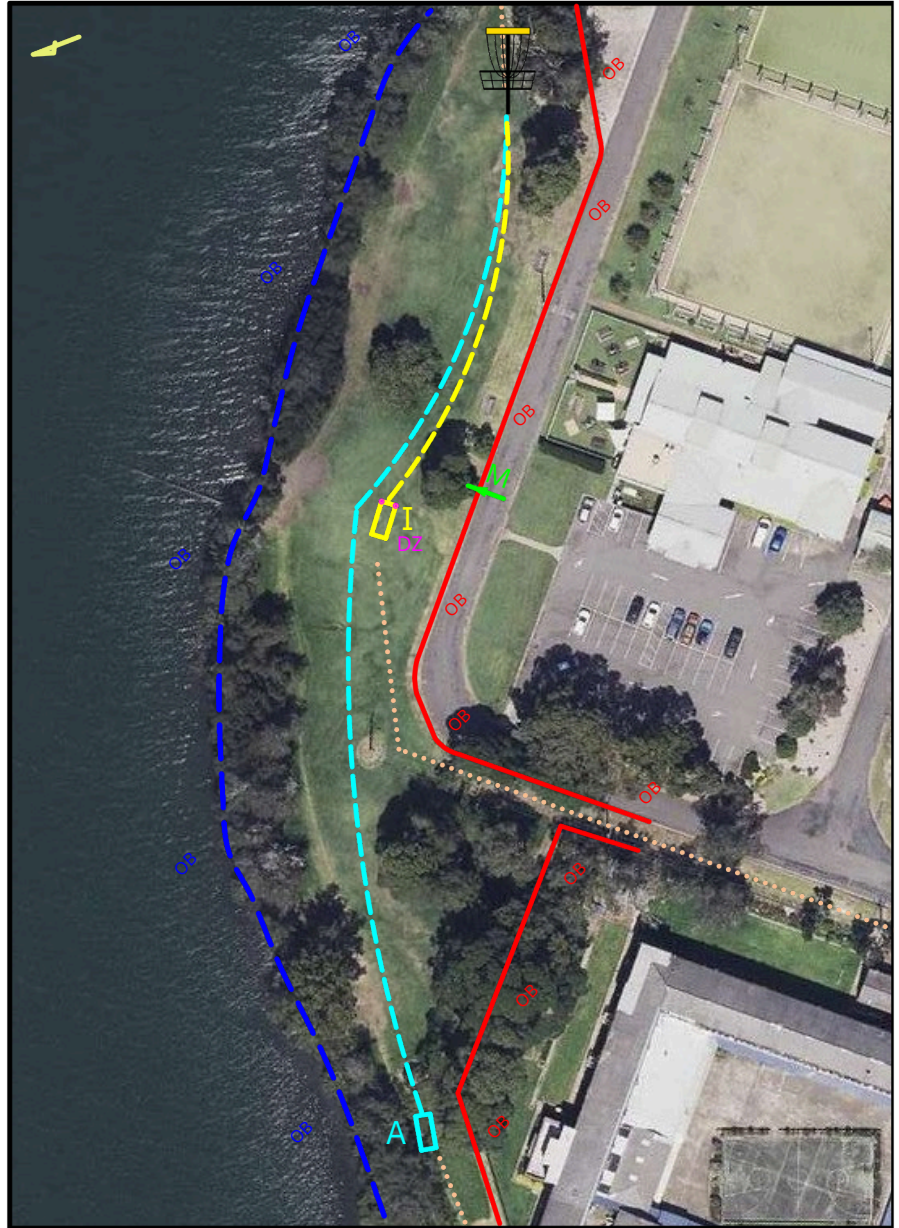


# Hole 15 – Intermediate

15

Par 3

70m



## Notes:

OB water left, OB road and beyond right  
Mando left of marked tree, DZ is Intermediate tee.

There is a PDGA 806.03 Casual Area declared for the lantana behind the basket. An optional relief DZ is marked 12m from the basket.

Hole Sponsor



CTP

Day 3: MA50, MA3, MA4, MJ15  
and FA2, FA3, FA4, FA40, FJ15

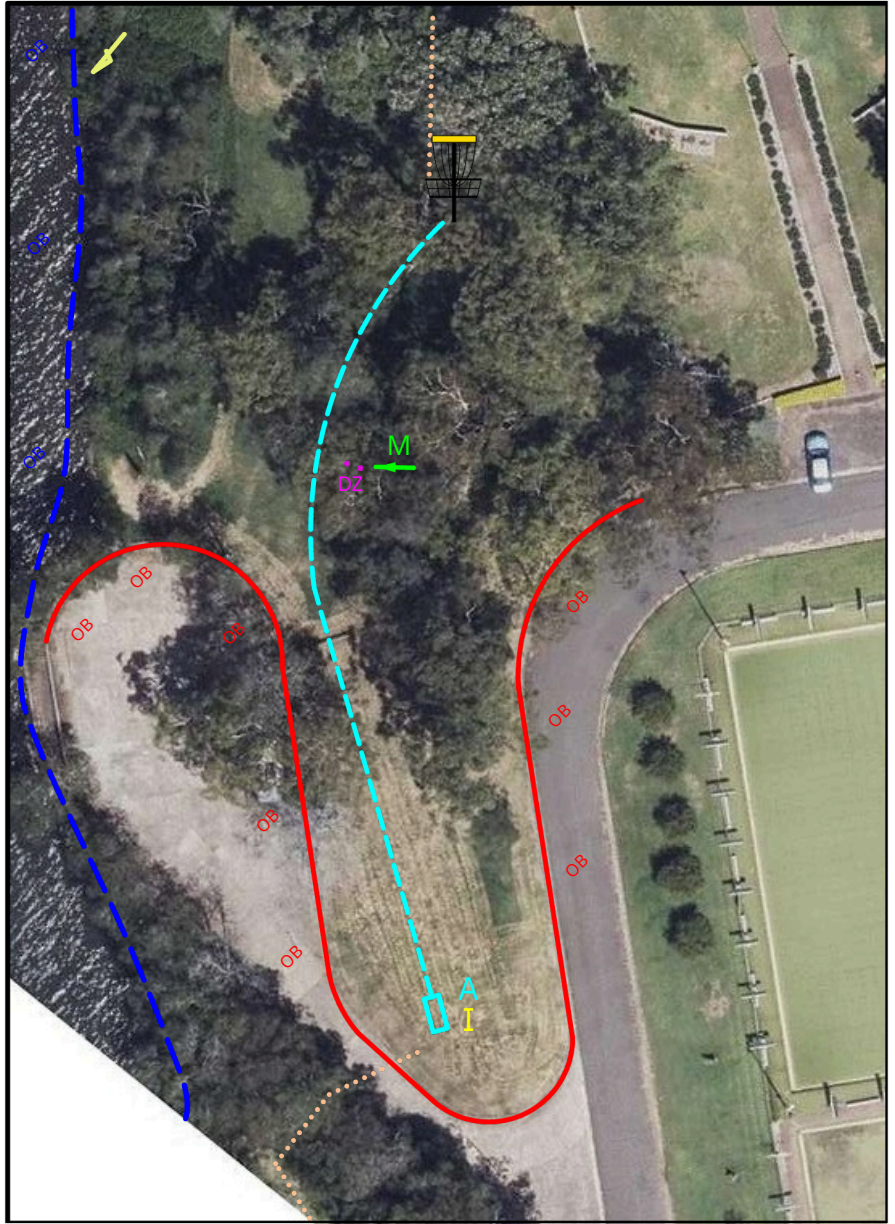
# Hole 16 – Adv/Int

16

16

Par 3

65m



## Notes:

OB water and road.  
Mando left of marked tree.  
Memorial concrete is OB

Hole Sponsor



CTP Day 1: MA1, FA1, MA2, MA40



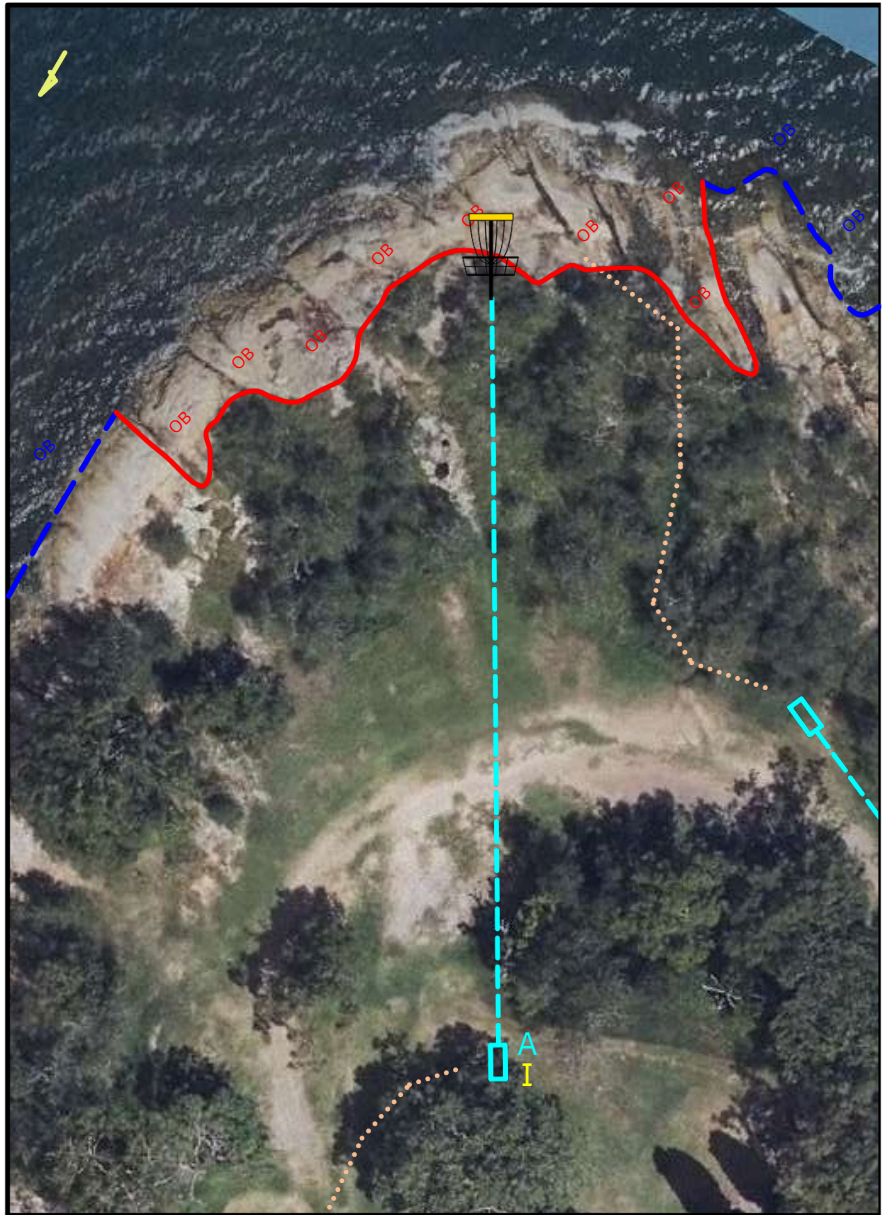
# Hole 17 – Adv/Int

17

17

Par 3

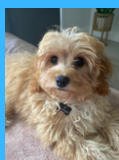
60m



## Notes:

OB water and OB line marked behind the basket.  
Please walk along the indicated path to the next tee.

Hole Sponsor



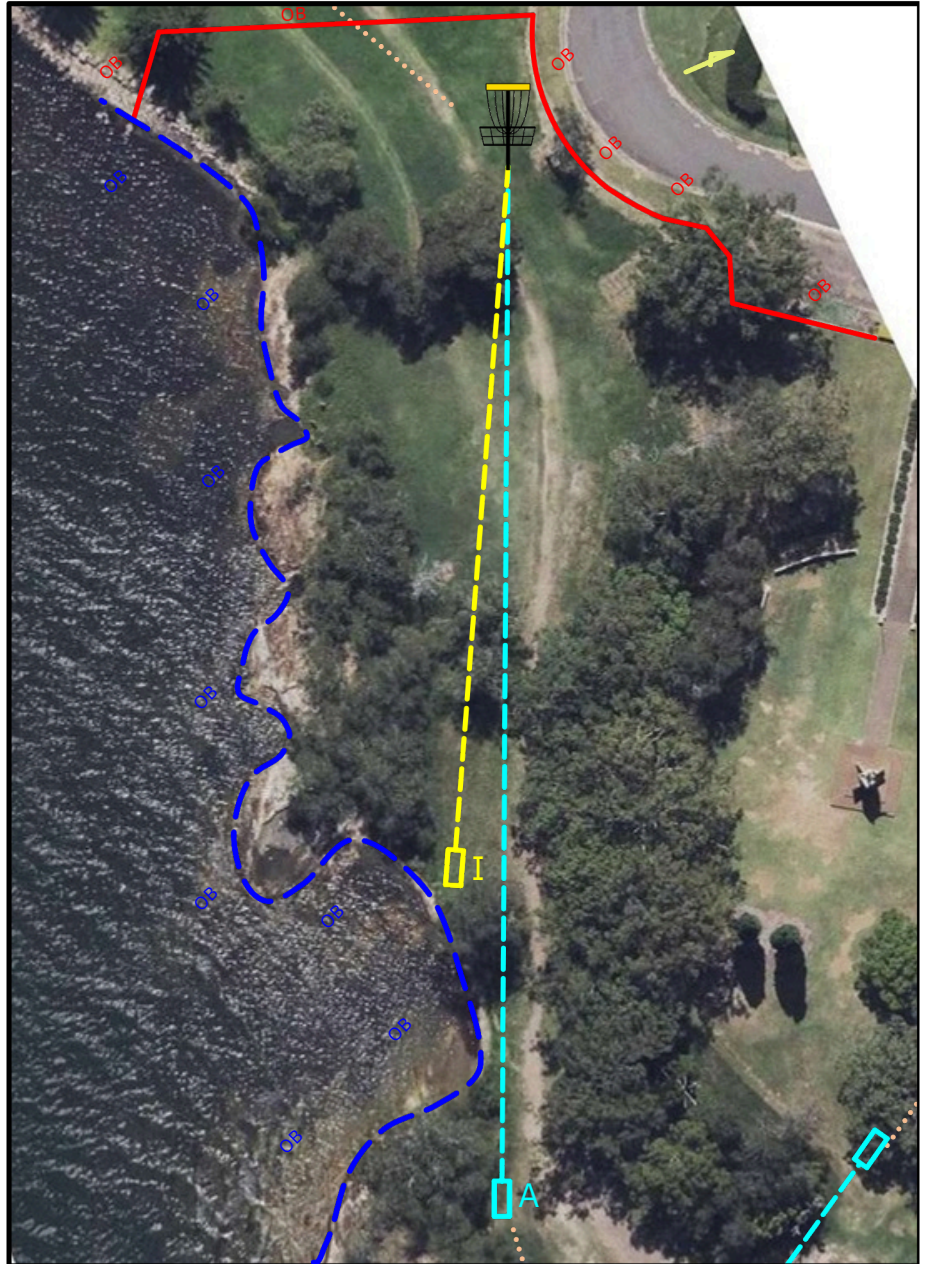


# Hole 18 – Advanced

18

Par 3

100m



## Notes:

OB water left

OB fence and beyond right and behind basket

Hole Sponsor



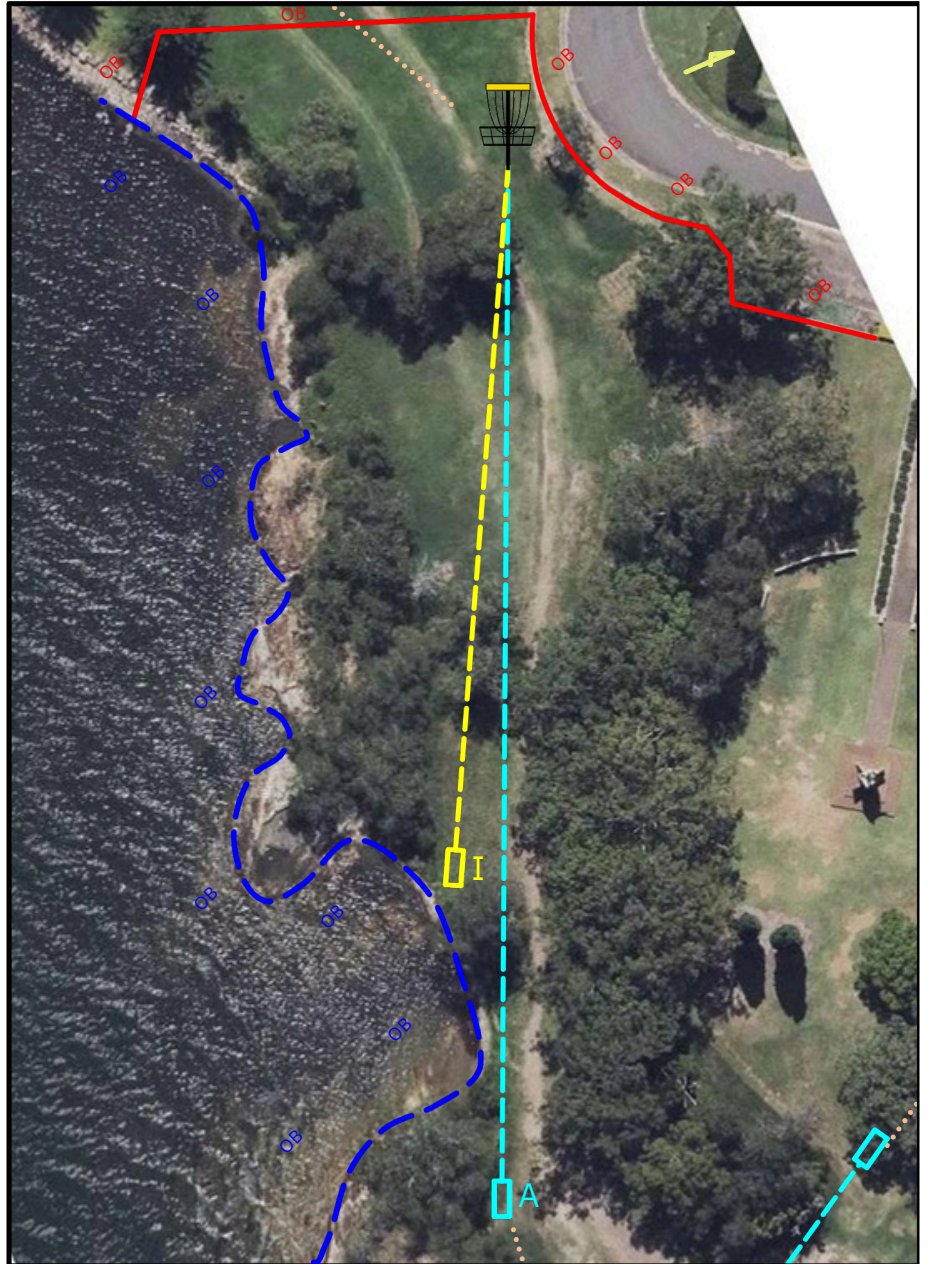
CTP Day 3: MPO, MP40, FPO

# Hole 18 – Intermediate

18

Par 3

70m



## Notes:

OB water left

OB fence and beyond right and behind basket

Hole Sponsor

